

Fleet Cooler – Quick Start Guide

Key Points for a successful Installation of a Fleet Cooler POU

1. Install a WaterBlock System

The fleet cooler has a built in water regulator that is capable of reducing the water in pressure down to 3 bar, as an extra measure Ebac recommends that you install a waterblock system onto the mains water pipe before water enters the cooler. This is to prevent any continuous leaks if the cooler was to fail.

Ebac have created 2 installation kits suitable for use with 'Fleet Cooler' depending on the tube size you use to connect the cooler to the mains water supply.

BTS005 – Installation Kit suitable for use with 8mm Tube

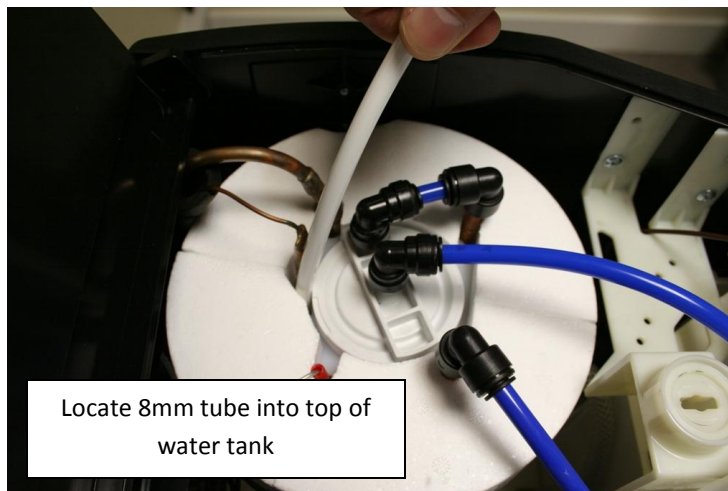
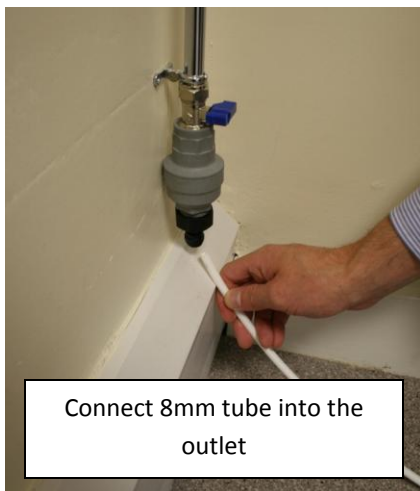
BTS006 – Installation Kit suitable for use with 6mm Tube (including 6mm to 8mm Stem Valve)



2. Ensure Cold tank is filled

Before connecting the mains water supply to the bulkhead connector on the rear of the cooler it is recommended that you first fill the water tank reservoir with water (this water submerses the water coils in the tank and is required in order for the cooler to work at its optimum performance.)

To fill the tank insert a length of 8mm LLDPE tube into the black outlet of the installation kit. Next the lid of the cooler needs to be opened, to do this remove the lid mat and release the ¼ turn lock using a coin or similar shaped tool. Once released open the lid and insert the opposite end of the 8mm tube into the cut-out on the top of the cold tank (indicated in the photo below)



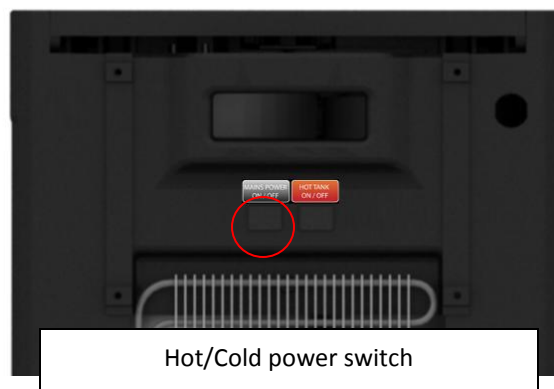
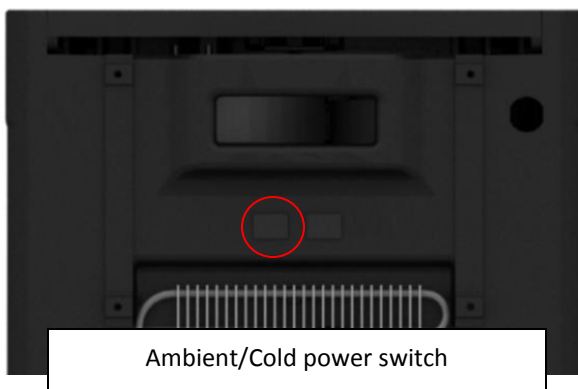
Turn the water supply on, this will fill the water tank. When the tank is full you will notice water filling the drip tray, once this happens turn off the water supply.

Remove the 8mm tube from the top of the tank and cut to the required length for the pipe to connect into the bulkhead on the rear of the cooler. Connect the pipe into bulkhead and turn on the water supply.

Lock the lid in position with the ¼ turn lock and replace the lid mat.

3. *Flushing the Carbon Filters*

Turn on the cooler at the mains socket (do not use an extension cord or double adapter, ensure Power supply is RCD protected at 30mA.) and on the power switch at the rear of the cooler (Ensure the hot tank switch is not turned on). Place a 3 liter container on the drip tray and dispense 3 liters of water from both water sides (Ambient/Cold or Hot/Cold).



When installing new filters on either a new cooler or when replacing them during the sanitization you should always ensure you flush at least 3 liters of water through both the filters, this will purge any trapped air and soak the carbon blocks.

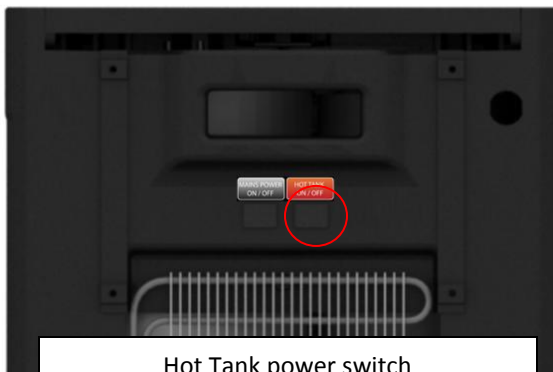


Dispense 3 liters of water from the Hot side by pressing the buttons above



Dispense 3 liters of water from the Cold side by pressing the button above

Note: On a Hot/Cold cooler once 3 liters of water has been dispensed turn the hot tank switch on the rear of the cooler on.



Hot Tank power switch

Your fleet cooler installation is now complete.

The cooler will take approximately 1 hour for the cold water to reach its set-point and around 10 minutes to get the hot water up to temperature.