



Maestro

MAESTRO Pressure Coolers

11/17 Powerscroft Road, Sidcup, Kent. DA14 5NH

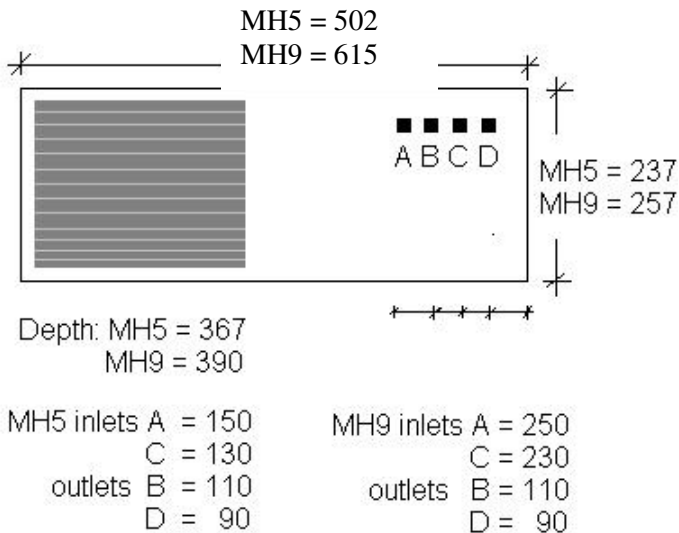
Telephone: 020 8302 4035 Fax: 020 8302 8933

E-mail: sales@maestrintl.co.uk

Website: www.maestrintl.co.uk

Water Coolers*Drinking Fountains*Bottled Water Deliveries*Accessories*Sanitization

Model MH5 & MH9



OPTIMUM WATER PRESSURE

2.5 Bar

Min 1.4 Bar Max 5.6 Bar

A regulator should be installed where extreme pressures exist.

WATER SYSTEM:

Stainless Steel water coil immersed in ice bank reservoir for greater efficiency

REFRIGERATION SYSTEM:

Fan cooled shrouded condenser. High torque capacitor start hermetically sealed compressor with resetting type overload protector. Capillary controlled with ozone-friendly R134A refrigerant.

TECHNICAL DATA SHEET

Model MH5 water cooler will produce 40 litres per outlet per hour of cooled water at 10°C (50°F) and the MH9 will produce 72 litres per outlet per hour.

ELECTRICAL:

230V, AC 50Hz 1ph
FLA: 1.8 A LRA: 8A

PLUMBING:

A Flexible hose is supplied to connect machine to water supply allowing easy access for maintenance. Hose end fitting is 15mm plain.

A stop cock should be fitted to the supply line. Prior to installing the machine ensure mains water supply is thoroughly flushed.

Connect to potable water supply only.

THERMOSTAT SETTING:

Factory set at 8°C ± 2°C

INSTALLATION:

For best performance, avoid placing in direct sunlight or immediately adjacent to heating appliances. Allow 100mm airspace around unit for adequate ventilation. Slide the lid on the top of the machine open and fill with water.

We recommend that an anti-flood device should be fitted by the installer, available from Maestro as an option.

CAUTION:

UNIT **NOT** TO BE USED IN OPEN AIR, EXPOSED TO RAIN, IN HIGH HUMIDITY OR WET AREAS. IE: BY SWIMMING POOLS, SHOWERS OR SAUNAS ETC.

PACKAGING:

MH5:	Dimension:	505 x 560 x 280 mm
	Weight:	23 kgs
MH9:	Dimension:	505 x 650 x 290 mm
	Weight:	27 kgs

Specification subject to change without notice.

