

# **Product Specification**

## **UK Model No. - PLF8FPMY**

**GPH – 1 US Gallon = 3.7 litres  
This model is supplied in 240v**

**Models**

- PLF8FPM delivers 8 gph of chilled drinking water when the push-button is depressed, water continues to flow as long as the button is depressed.
- PLF12FPM delivers 12 gph of chilled drinking water when the push-button is depressed; water continues to flow as long as the button is depressed.
- These models allow your facility to comply with the ADA requirements, providing the floor to nozzle height is 36" or less, and proper clear floor space is provided.

**Standard Features**

- Waterways Are Lead-Free In Materials & Construction
- Stainless Steel Top
- Flexible Bubbler Guard
- Heavy-Gauge Galvanized Steel Wall Mounting Sleeve
- High-Efficiency Cooling Tank and Coil
- Refrigerant R-134a
- Limited 5-Year Warranty

**Installation**

- Prior to roughing-in, consult with local, state, and federal codes for proper mounting height.
- Shipped with complete instructions and wall mounting sleeve.

**Colors**

- Standard Finish: Stainless Steel
- Optional finishes at extra cost: Regency Bronze


**Accessories**

*Carafe/Glass Fillers (Factory Installed)*


- 030239-003

**Limited 5-Year Warranty** (Continental limits of the United States and Canada): Five years on the sealed refrigeration system and most component parts. Detailed warranty certificate enclosed with each water cooler; sample copy available upon request.

Components in these water coolers/fountains are lead free as defined by the Safe Drinking Water Act Amendments of 1986, and the Lead Contamination Control Act of 1988.



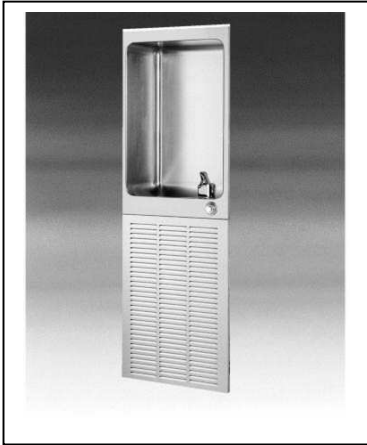
**OASIS**



# WATER COOLERS FULLY-RECESSED

An installation with plenty of user headroom. Reverse side of the basin is sound dampened.

**Model PLF8FPM Shown**





Models covered by these specifications comply with all known Plumbing Codes. Listed by Underwriter's Laboratories. Certified by Canadian Standards Association, and Certified to Air Conditioning and Refrigeration Institute Standard 1010.



Indicates conformity to European Union Directives.

**Export Warranty:** One year on the sealed refrigeration system and most component parts. Four-year replacement contract on sealed refrigeration system. Detailed warranty certificate enclosed with each water cooler, sample copy available upon request.

Specifications are subject to change without notice.

Copyright 1999 OASIS Corporation

Oasis® is a registered trademark of OASIS Corporation.

\*Air Conditioning and Refrigeration Institute Standard Rating Condition 80°F inlet water temperature.

\*\*Special export models available, operable on 220-240 volts, 50/60 Hz. UL, CSA and ARI certification not applicable.

Model	50°F Drinking Water 90°F Ambient Air Temperature*		Pre-Cooler	Hot 'N Cold Model	115 Volts, 60 Hz			Glass Filler Accessory Option	Cabinet Color Option	Net Weight (Approx.)
	Rated Capacity GPH	Base Rate GPH			Compr. HP	Full Load Amps	Rated Watts			
PLF8FPM**	8.0	8.0	No	No	1/5	4.6	340	Yes	Yes	92 Lbs.
PLF12FPM**	12.0	12.0	No	No	1/3	8.7	620	Yes	Yes	96 Lbs.

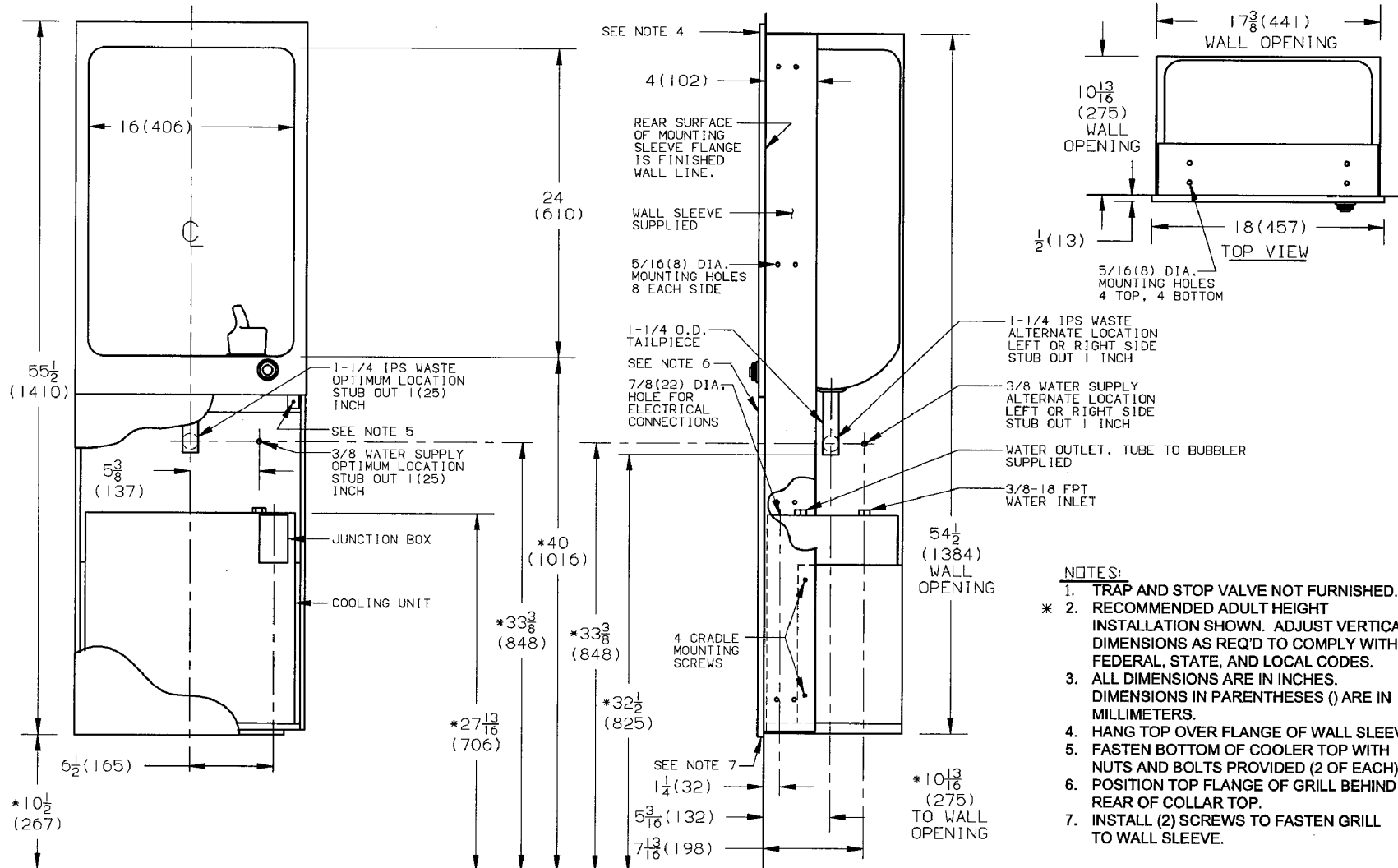
**OASIS Corporation**

265 North Hamilton Road ♦ PO Box 13150 ♦ Columbus, Ohio 43213-0150 U.S.A.

1.800.646.2747 ♦ [www.OasisWaterCoolers.com](http://www.OasisWaterCoolers.com)

# OASIS Corporation

265 North Hamilton Road • PO Box 13150  
 Columbus, Ohio 43213-0150 U.S.A.  
 1.800.646.2747 • [www.OasisWaterCoolers.com](http://www.OasisWaterCoolers.com)



- NOTES:**
- TRAP AND STOP VALVE NOT FURNISHED.
  - \* RECOMMENDED ADULT HEIGHT INSTALLATION SHOWN. ADJUST VERTICAL DIMENSIONS AS REQ'D TO COMPLY WITH FEDERAL, STATE, AND LOCAL CODES.
  - ALL DIMENSIONS ARE IN INCHES. DIMENSIONS IN PARENTHESES () ARE IN MILLIMETERS.
  - HANG TOP OVER FLANGE OF WALL SLEEVE
  - FASTEN BOTTOM OF COOLER TOP WITH NUTS AND BOLTS PROVIDED (2 OF EACH)
  - POSITION TOP FLANGE OF GRILL BEHIND REAR OF COLLAR TOP.
  - INSTALL (2) SCREWS TO FASTEN GRILL TO WALL SLEEVE.

Oasis® is a registered trademark of OASIS Corporation  
 Specifications are subject to change without notice  
 Copyright 1999 OASIS Corporation

THIRD ANGLE PROJECTION	ROUGHING-IN AND DIMENSIONAL DRAWING
------------------------	-------------------------------------

## Models PLF8FPM & PLF12FPM